



## How to convert your Windows Server 2008... to a Workstation!



[Home] [Installation] [Post Setup] [New User & Autologon] [Owner Information] [Drivers] [IE Enhanced Security] [Wireless Network] [Sun Java] [Shutdown Tracker] [Sound Acceleration] [Desktop Experience] [Aero Themes] [Windows Search] [Adv.Configuration] [SuperFetch] [CTRL+ALT+DEL] [Other Services] [Tweaks] [Games] [Applications] [Downloads] [Forum] [Contact]

### Windows Server 2008 to Workstation Ultimate Guide

Windows Server 2008 is the most advanced Windows Server operating system yet, designed to power the next-generation of networks, applications, and Web services. With Windows Server 2008 you can develop, deliver, and manage rich user experiences and applications, provide a highly secure network infrastructure, and increase technological efficiency and value within your organization.

Windows Server 2008 builds on the success and strengths of its Windows Server predecessors while delivering valuable new functionality and powerful improvements to the base operating system. New Web tools, virtualization technologies, security enhancements, and management utilities help save time, reduce costs, and provide a solid foundation for your information technology (IT) infrastructure.

The purpose of creating this guide is to make it short, simple, and to the point! This is the only guide you will find on the Internet that has gone into so much depth. The sections above do not have to be taken in any particular order, but for the full [Workstation](#) experience it's recommended you do it step-by-step!

I won't go into too much detail here, besides who loves reading too much? Not many people I bet, so I will go straight to the point in these sections, allowing a quick and easy configuration of your [Server](#) to convert it to act like a Workstation!

#### [Blank and Printed Pucks](#)

Unbeatable prices. Fast turn-around Quality Official Regulation Pucks.  
[www.officialgamepuck.com](http://www.officialgamepuck.com)

#### [The Best Hockey Training](#)

Harrington College of Canada The Place for Hockey.  
Former NHL'er  
[www.hockeyplayerinfo.com](http://www.hockeyplayerinfo.com)

#### [Ice and Skates Shop](#)

We are deliver from Germany The First-European Skate Shop  
[www.HockeyOffice.com](http://www.HockeyOffice.com)

#### [2010 NHL Draft Info](#)

Hockey's Future has all your NHL Draft info - absolutey free!  
[www.hockeysfuture.com](http://www.hockeysfuture.com)

Ads by Google



Let's move on to the sections where we will be installing and tweaking Windows Server 2008!

**Thanks goes out to these sites for supporting this guide!**

[TechConnect]



[WindowsBeta]



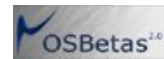
[4Peeps]



[NT Compatible]



[Mister.de]



All trademarks mentioned on this page are the property of their respective owners  
MSFN is not affiliated with Microsoft  
Copyright © 2001-2010 msfn.org  
[Privacy Policy](#)



## How to convert your Windows Server 2008... to a Workstation!



[Home] [Installation] [Post Setup] [New User & Autologon] [Owner Information] [Drivers] [IE Enhanced Security] [Wireless Network] [Sun Java] [Shutdown Tracker] [Sound Acceleration] [Desktop Experience] [Aero Themes] [Windows Search] [Adv.Configuration] [SuperFetch] [CTRL+ALT+DEL] [Other Services] [Tweaks] [Games] [Applications] [Downloads] [Forum] [Contact]

### Windows Server 2008 Installation

#### **EZGlide 350 Synthetic Ice**

Skate as if you were on real ice!  
Hockey stops, jumps, spins the same  
[www.ezglide350.com](http://www.ezglide350.com)

#### **Custom Ministicks**

Custom printed plastic ministicks  
High quality at a great price!  
[www.officialgamepuck.com](http://www.officialgamepuck.com)

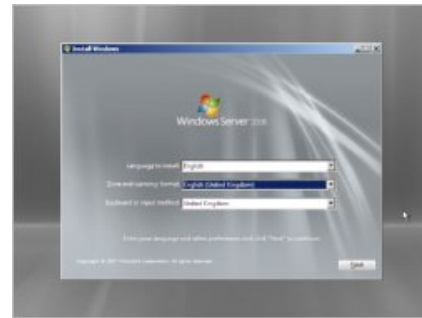
#### **Hockey Training At Home**

Practice On Your Own Home Rink  
Increase Speed and Accuracy Quickly  
[www.IcePro.ca/HomeRink](http://www.IcePro.ca/HomeRink)

Ads by Google

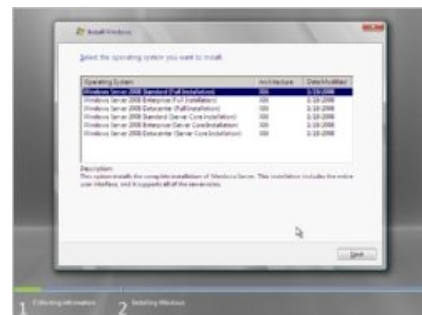
I'm sure you'll know how to install Windows Server 2008, its basically done the same way as Windows Vista. Let's move on!

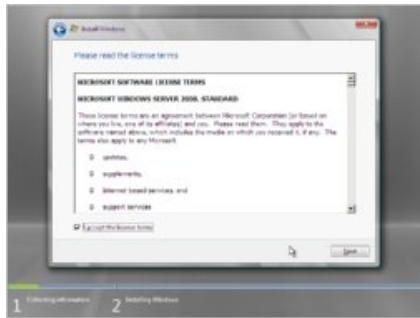
Boot up your Windows Server 2008 from DVD.



On the next screen just click **Install Now** button.

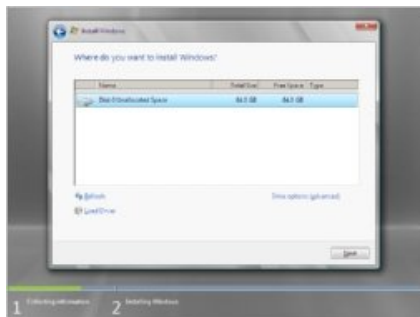
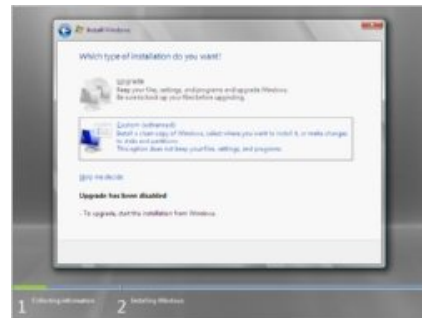
Select your version of Windows Server 2008 (**Full Installation**) and click **Next**.





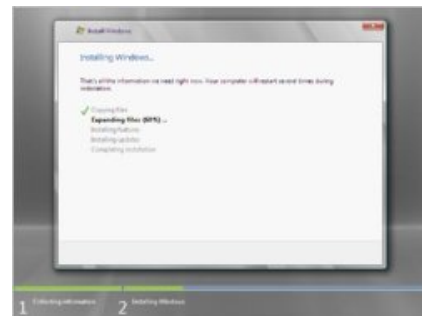
Select **I accept the license terms** and click **Next**.

Choose the option **Custom (advanced)**.



Select the harddisk and partition where you want to install Windows Server 2008 and click **Next**.

Windows Server 2008 now installing.



After installation was finished your computer will restart and you will be prompted to change your password. **Changing your password is very important step**. Now let's move on to the next section.

Page 2 - Post Setup

**Ice and Skates Shop**  
We are deliver from Germany The  
First-European Skate Shop  
[www.HockeyOffice.com](http://www.HockeyOffice.com)

**2010 NHL Draft Info**  
Hockey's Future has all your NHL Draft  
info - absolutely free!  
[www.hockeyfuture.com](http://www.hockeyfuture.com)

**Drag Flick Video Tutorial**  
Free Field Hockey Masterclass Video  
Simply Register & Watch Top Coaches  
[www.coachinghockey.com](http://www.coachinghockey.com)

**Simmons Goalie Specialist**  
Affordable Factory Direct Pricing World  
Wide Shipping  
[www.donsimmons.com](http://www.donsimmons.com)

Ads by Google

Thanks goes out to these sites for supporting this site!



All trademarks mentioned on this page are the property of their respective owners  
MSFN is not affiliated with Microsoft  
Copyright © 2001-2010 msfn.org  
Privacy Policy

[Home] [Installation] [Post Setup] [New User & Autologon] [Owner Information] [Drivers] [IE Enhanced Security] [Wireless Network] [Sun Java] [Shutdown Tracker] [Sound Acceleration] [Desktop Experience] [Aero Themes] [Windows Search] [Adv.Configuration] [SuperFetch] [CTRL+ALT+DEL] [Other Services] [Tweaks] [Games] [Applications] [Downloads] [Forum] [Contact]

### Windows Server 2008 Post Setup

#### **Top Quality Hockey Pads**

All The Brand Name Gear You Need,  
At The Fantastic Prices You Want!  
[www.HockeyMonkey.com](http://www.HockeyMonkey.com)

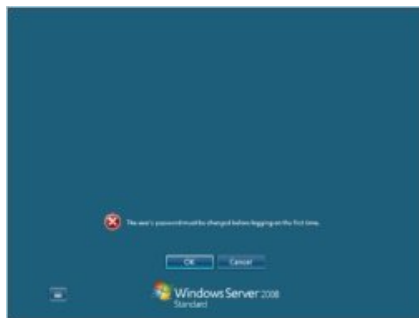
#### **Simmons Goalie Specialist**

Affordable Factory Direct Pricing  
World Wide Shipping  
[www.donsimmons.com](http://www.donsimmons.com)

#### **WPG Fiberglass**

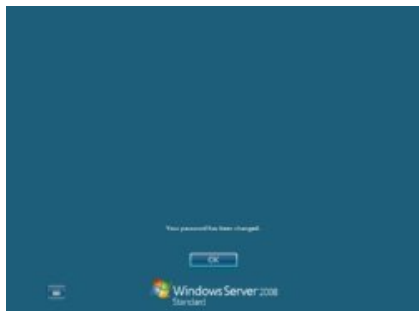
Specializing in fiberglass repair &  
manufacturing.  
[www.wpgfiberglass.com](http://www.wpgfiberglass.com)

Ads by Google



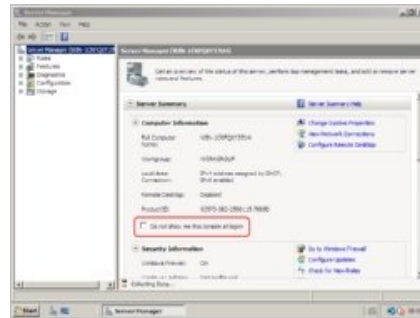
You **MUST** type in a strong password with at least one capital letter and one number, for example **Go4msfn**, otherwise you will get an error message saying that you doesn't comply to the security enforcements of the domain. You can disable this strong password enforcement later.

After succesfully changing the password you will see the message that your password has succesfully been changed.



Click **OK**. Your desktop will now show up.

The first thing you should do is disable the **Server Manager** window, you don't want it nagging you everytime you boot up Windows. Do you?



Now let's move on to the next section, where you will create a new user account.

**Ice and Skates Shop**  
We are deliver from Germany The  
First-European Skate Shop  
[www.HockeyOffice.com](http://www.HockeyOffice.com)

**Quality Hockey Helmets**  
All The Brand Name Gear You Need,  
At The Fantastic Prices You Want!  
[www.HockeyMonkey.com](http://www.HockeyMonkey.com)

**Miracle USA Hockey Jersey**  
Officially Licensed 1980 USA Hockey  
Miracle on Ice Team Hockey Jerseys  
[www.hockeyjerseysdirect.com](http://www.hockeyjerseysdirect.com)

**2010 NHL Draft Info**  
Hockey's Future has all your NHL Draft  
info - absolutley free!  
[www.hockeyfuture.com](http://www.hockeyfuture.com)

Ads by Google

Thanks goes out to these sites for supporting this site!



All trademarks mentioned on this page are the property of their respective owners  
MSFN is not affiliated with Microsoft  
Copyright © 2001-2010 msfn.org  
Privacy Policy

[Home] [Installation] [Post Setup] [New User & Autologon] [Owner Information] [Drivers] [IE Enhanced Security] [Wireless Network] [Sun Java] [Shutdown Tracker] [Sound Acceleration] [Desktop Experience] [Aero Themes] [Windows Search] [Adv.Configuration] [SuperFetch] [CTRL+ALT+DEL] [Other Services] [Tweaks] [Games] [Applications] [Downloads] [Forum] [Contact]

## Creating a New User Account & Autologon

### **EZGlide 350 Synthetic Ice**

Skate as if you were on real ice!  
Hockey stops, jumps, spins the same  
[www.ezglide350.com](http://www.ezglide350.com)

### **The Best Hockey Training**

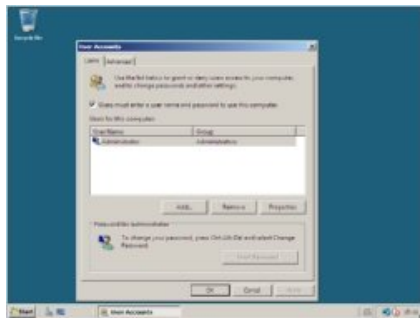
Harrington College of Canada The  
Place for Hockey. Former NHL'er  
[www.hockeyplayerinfo.com](http://www.hockeyplayerinfo.com)

### **Blank and Printed Pucks**

Unbeatable prices. Fast turn-around  
Quality Official Regulation Pucks.  
[www.officialgamepuck.com](http://www.officialgamepuck.com)

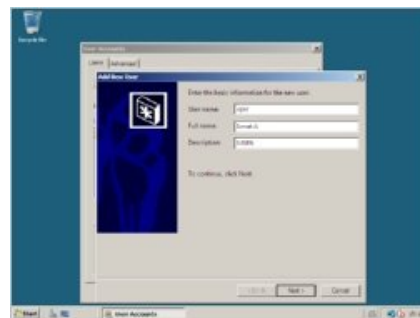
Ads by Google

The Welcome Screen is non-existent in Windows Server 2008, so you weren't prompted to make a new user name upon first boot-up. But worry not, its fairly simple to do, as everything in this guide is!



Go to **Start -> Run ->** and type in **control userpasswords2** and press enter. The User Accounts window will appear.

Click on **Add** and then fill in the necessary fields with your User name, Full name, and Description.



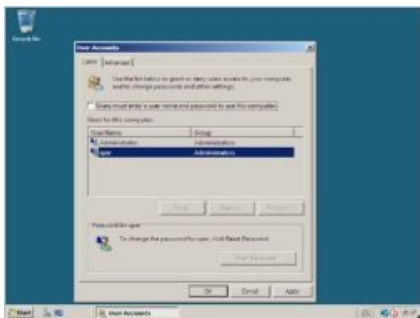
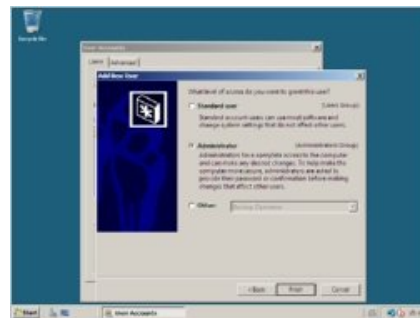
Click on **Next** and fill in both password fields and then click on **Next**.





On the next wizard box choose **Other** and select **Administrators**, lastly click on **Finish!**

If you wish for a more advanced configuration, you can always use **lusrmgr.msc** by running it from the **Run** box again.

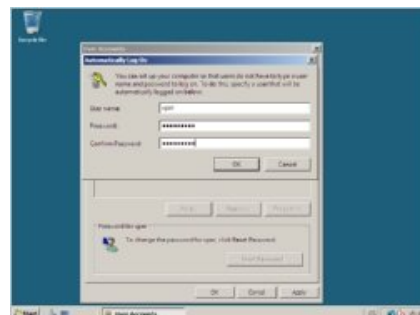


Now that we've set up a personal user account, we want it to autologon. If you don't wish for this feature please skip this step.

Make sure your name is **highlighted** in the User Accounts window, as shown in the screenshot to the right, and then **uncheck** the box **Users must enter a user name and password to use this computer** and then click on **Apply**.

If you did it right, you will get another window asking for the password to use for autologon on *your account name*. Fill in both password fields, and you're ready to go!

Now log off and log in with your new account!



If you want to disable the CTRL-ALT-DEL prompt, please go to this page

Let's move on to the next section - Computer Owner Information Configuration!

HIS- European Skate Shop  
[www.HockeyOffice.com](http://www.HockeyOffice.com)

Crez votre canne personnalisée :  
[www.busch-hockey.com](http://www.busch-hockey.com)

Become Quicker - Stronger - Faster  
[www.ElitePowerSkating.com](http://www.ElitePowerSkating.com)

Stick in Senior, Jv1, Jv2 & Jv3 size  
[www.hockeychina.com](http://www.hockeychina.com)

Ads by Google

**Thanks goes out to these sites for supporting this site!**



All trademarks mentioned on this page are the property of their respective owners

MSFN is not affiliated with Microsoft

Copyright © 2001-2010 msfn.org

[Privacy Policy](#)